

# Winu Project Fauna and Habitat

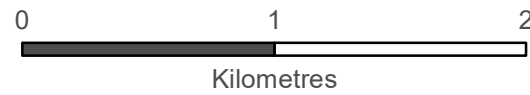
## Legend

### Priority Fauna

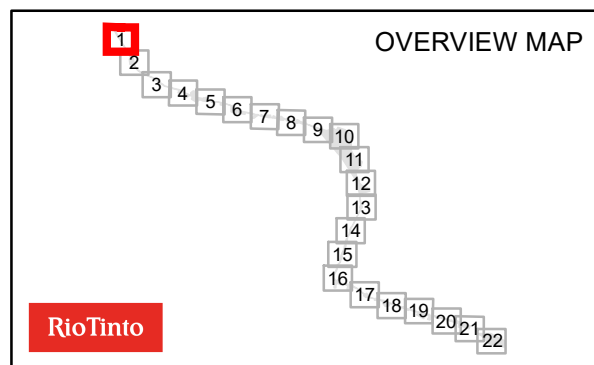
- Macrotis lagotis*
- Indicative Disturbance Footprint
- Disturbance Envelope
- RTX Granted Miscellaneous Licences
- Native Title Determinations

### Fauna Habitat

- Rock outcropping
- Inland sand dunes
- Gravelly lateritic rises
- Clayey sand plain with termitaria
- Gravelly lateritic rise
- Inferred longitudinal sand dune ridge
- Inferred shrub and spinifex on sandplain
- Longitudinal sand dune ridge
- Shrub and spinifex on sandplain
- Disturbed/cleared



**Publisher:** Michael Rouse  
**Date Published:** Thursday, 2 April 2020  
**Coordinate System:**  
 GCS GDA 1994  
 Datum: GDA 1994  
 Units: Degree  
**Scale:** 1:30,000  
 Rio Tinto © Copyright



# Winu Project Fauna and Habitat

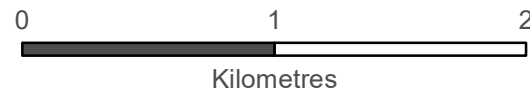
## Legend

### Priority Fauna

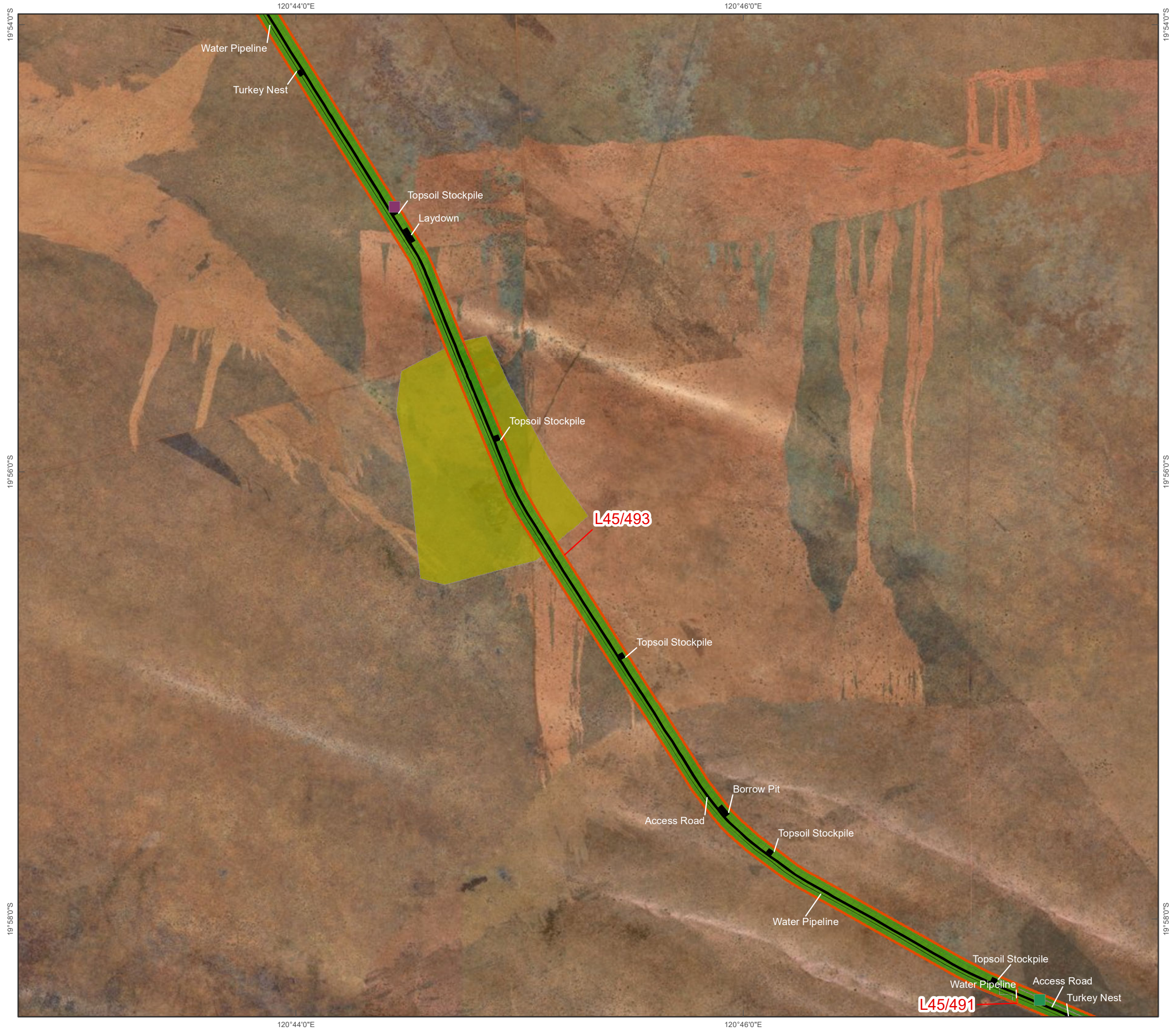
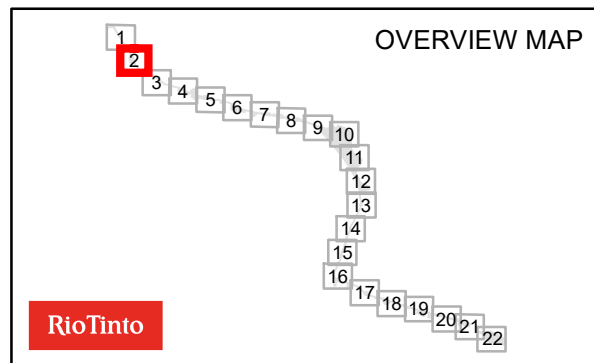
- Glareola maldivarum
- Macrotis lagotis
- Indicative Disturbance Footprint
- Disturbance Envelope
- RTX Granted Miscellaneous Licences
- Native Title Determinations

### Fauna Habitat

- Rock outcropping
- Inland sand dunes
- Gravelly lateritic rises
- Clayey sand plain with termitaria
- Gravelly lateritic rise
- Inferred longitudinal sand dune ridge
- Inferred shrub and spinifex on sandplain
- Longitudinal sand dune ridge
- Shrub and spinifex on sandplain
- Disturbed/cleared



Publisher: Michael Rouse  
Date Published: Thursday, 2 April 2020  
Coordinate System:  
GCS GDA 1994  
Datum: GDA 1994  
Units: Degree  
Scale: 1:30,000  
Rio Tinto © Copyright



# Winu Project Fauna and Habitat

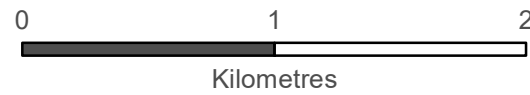
## Legend

### Priority Fauna

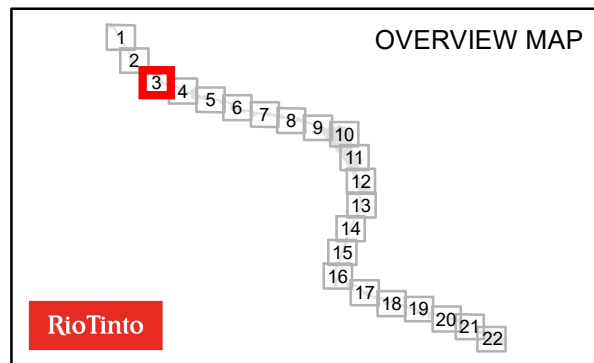
- Glareola maldivarum
- Indicative Disturbance Footprint
- Disturbance Envelope
- RTX Granted Miscellaneous Licences
- Native Title Determinations

### Fauna Habitat

- Rock outcropping
- Inland sand dunes
- Gravelly lateritic rises
- Clayey sand plain with termitaria
- Gravelly lateritic rise
- Inferred longitudinal sand dune ridge
- Inferred shrub and spinifex on sandplain
- Longitudinal sand dune ridge
- Shrub and spinifex on sandplain
- Disturbed/cleared



Publisher: Michael Rouse  
 Date Published: Thursday, 2 April 2020  
 Coordinate System:  
 GCS GDA 1994  
 Datum: GDA 1994  
 Units: Degree  
 Scale: 1:30,000  
 Rio Tinto © Copyright



# Winu Project Fauna and Habitat

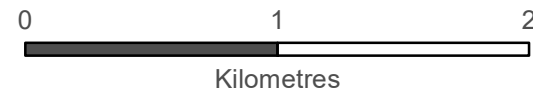
## Legend

### Priority Fauna

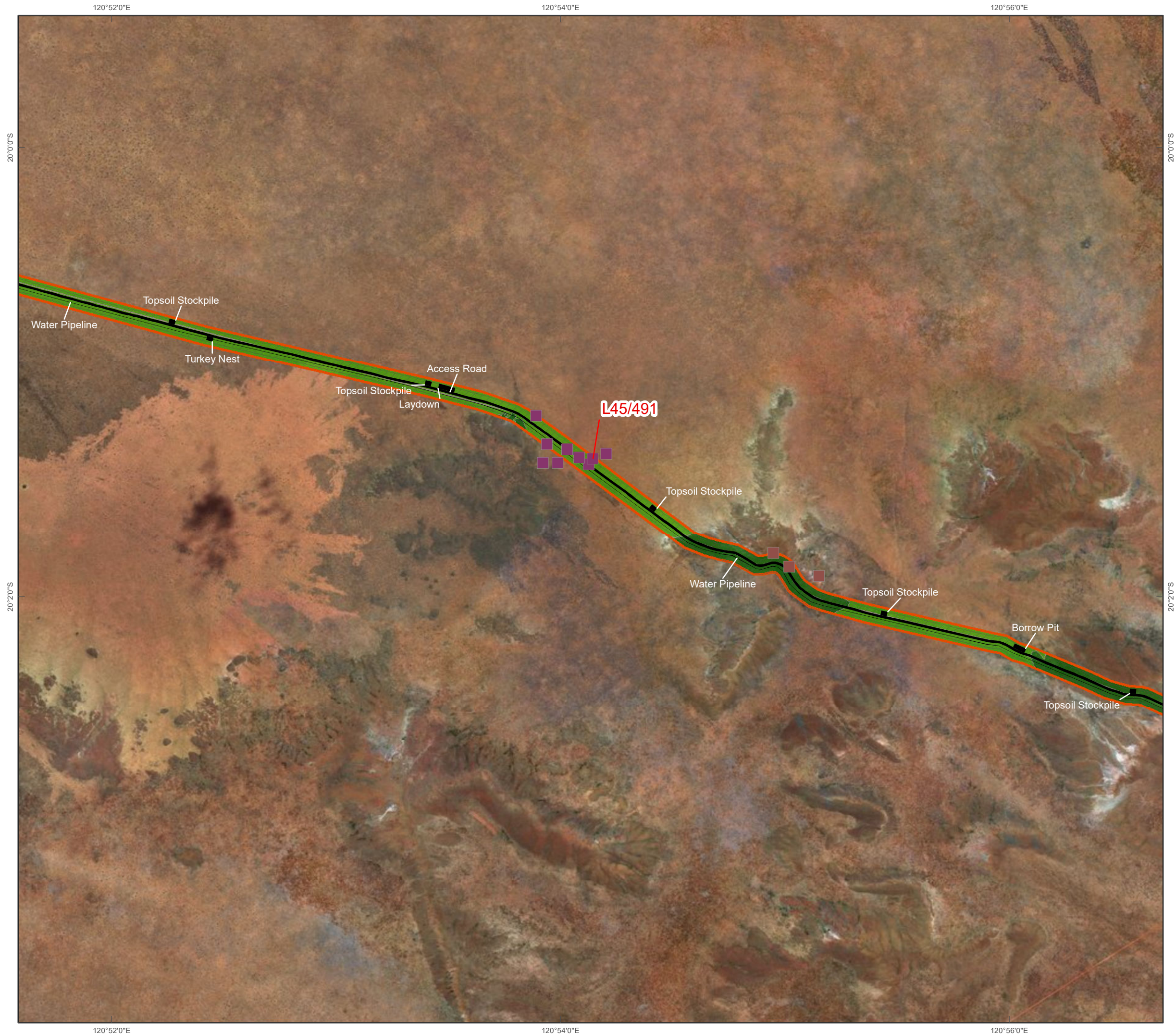
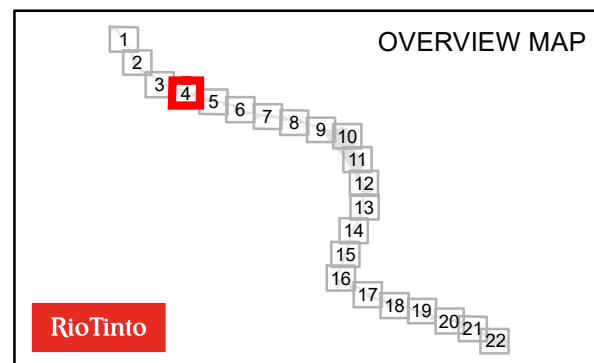
- Macrotis lagotis*
- Pseudomys chapmani*
- Indicative Disturbance Footprint
- Disturbance Envelope
- RTX Granted Miscellaneous Licences
- Native Title Determinations

### Fauna Habitat

- Rock outcropping
- Inland sand dunes
- Gravelly lateritic rises
- Clayey sand plain with termitaria
- Gravelly lateritic rise
- Inferred longitudinal sand dune ridge
- Inferred shrub and spinifex on sandplain
- Longitudinal sand dune ridge
- Shrub and spinifex on sandplain
- Disturbed/cleared



Publisher: Michael Rouse  
Date Published: Thursday, 2 April 2020  
Coordinate System:  
GCS GDA 1994  
Datum: GDA 1994  
Units: Degree  
Scale: 1:30,000  
Rio Tinto © Copyright



# Winu Project Fauna and Habitat

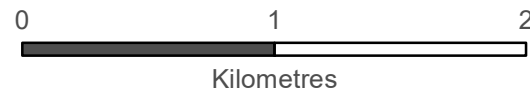
## Legend

### Priority Fauna

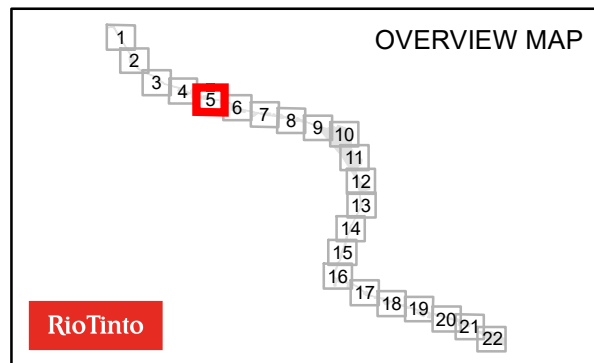
- Logorcheses conspicillatus
- Indicative Disturbance Footprint
- Disturbance Envelope
- RTX Granted Miscellaneous Licences
- Native Title Determinations

### Fauna Habitat

- Rock outcropping
- Inland sand dunes
- Gravelly lateritic rises
- Clayey sand plain with termitaria
- Gravelly lateritic rise
- Inferred longitudinal sand dune ridge
- Inferred shrub and spinifex on sandplain
- Longitudinal sand dune ridge
- Shrub and spinifex on sandplain
- Disturbed/cleared



Publisher: Michael Rouse  
 Date Published: Thursday, 2 April 2020  
 Coordinate System:  
 GCS GDA 1994  
 Datum: GDA 1994  
 Units: Degree  
 Scale: 1:30,000  
 Rio Tinto © Copyright



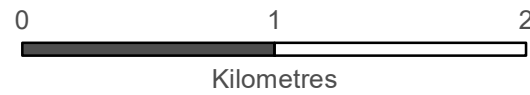
# Winu Project Fauna and Habitat

## Legend

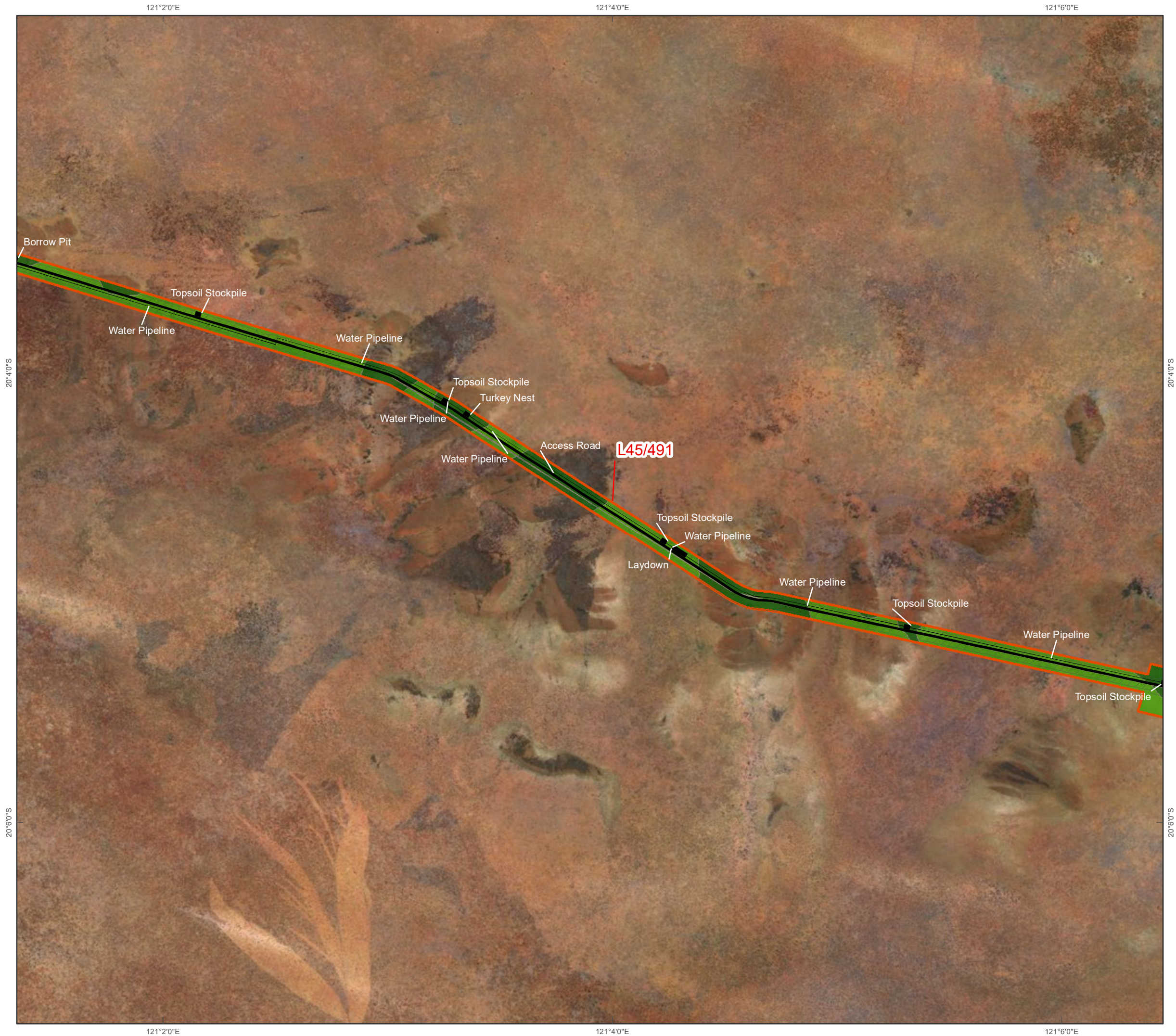
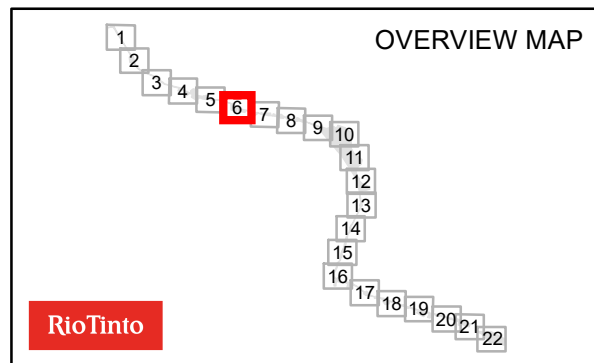
- Indicative Disturbance Footprint
- Disturbance Envelope
- RTX Granted Miscellaneous Licences
- Native Title Determinations

## Fauna Habitat

- Rock outcropping
- Inland sand dunes
- Gravelly lateritic rises
- Clayey sand plain with termitaria
- Gravelly lateritic rise
- Inferred longitudinal sand dune ridge
- Inferred shrub and spinifex on sandplain
- Longitudinal sand dune ridge
- Shrub and spinifex on sandplain
- Disturbed/cleared



Publisher: Michael Rouse  
Date Published: Thursday, 2 April 2020  
Coordinate System:  
GCS GDA 1994  
Datum: GDA 1994  
Units: Degree  
Scale: 1:30,000  
Rio Tinto © Copyright



# Winu Project Fauna and Habitat

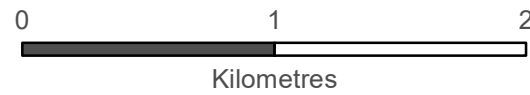
## Legend

### Priority Fauna

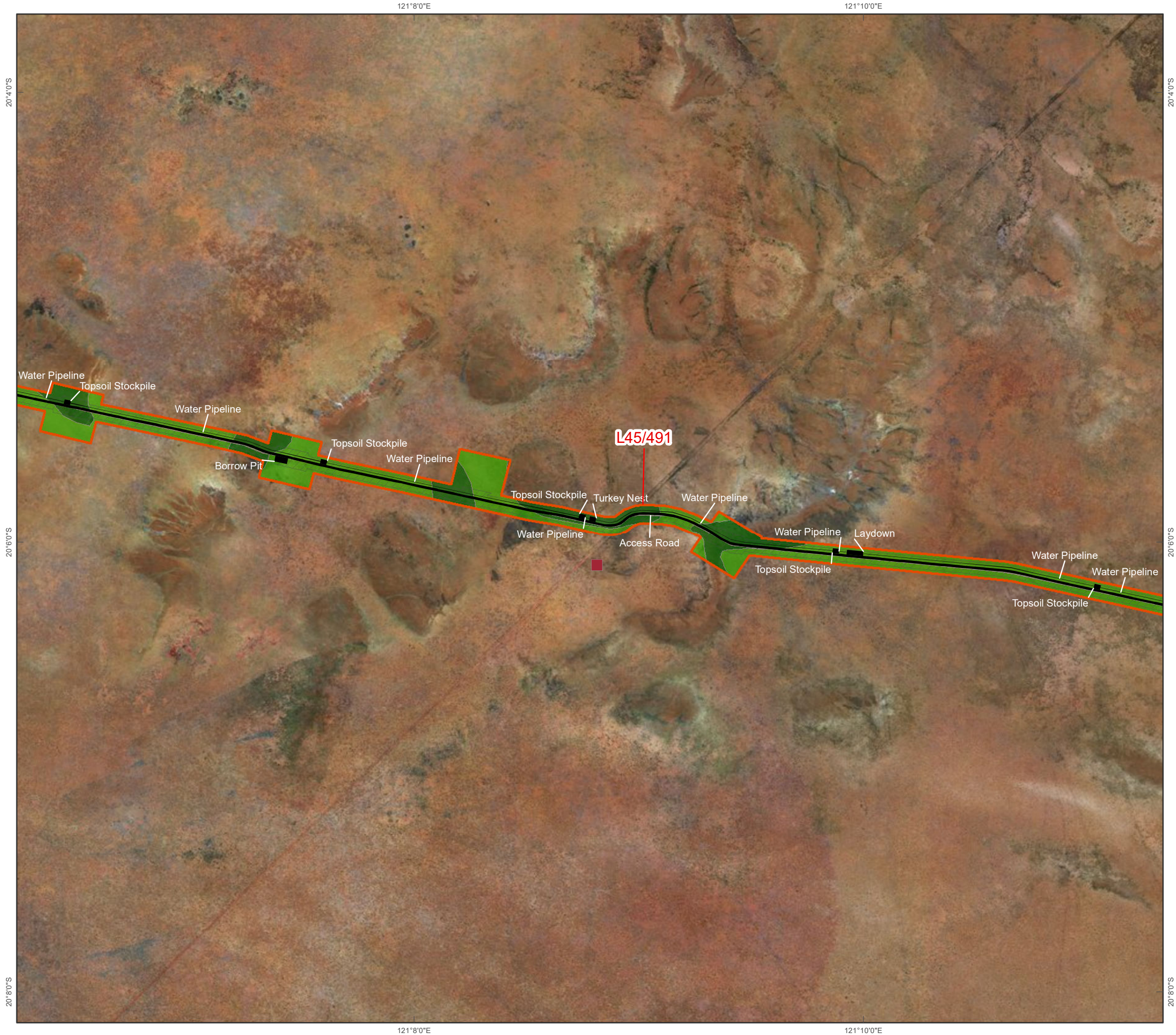
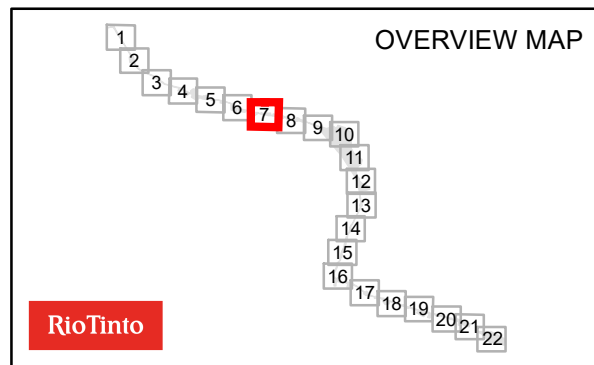
- Dasyurus hallucatus
- Indicative Disturbance Footprint
- Disturbance Envelope
- RTX Granted Miscellaneous Licences
- Native Title Determinations

### Fauna Habitat

- Rock outcropping
- Inland sand dunes
- Gravelly lateritic rises
- Clayey sand plain with termitaria
- Gravelly lateritic rise
- Inferred longitudinal sand dune ridge
- Inferred shrub and spinifex on sandplain
- Longitudinal sand dune ridge
- Shrub and spinifex on sandplain
- Disturbed/cleared



Publisher: Michael Rouse  
 Date Published: Thursday, 2 April 2020  
 Coordinate System:  
 GCS GDA 1994  
 Datum: GDA 1994  
 Units: Degree  
 Scale: 1:30,000  
 Rio Tinto © Copyright



121°8'0"E

121°10'0"E

20°4'0"S

20°4'0"S

20°6'0"S

20°6'0"S

20°8'0"S

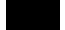



20°8'0"S

121°8'0"E

121°10'0"E

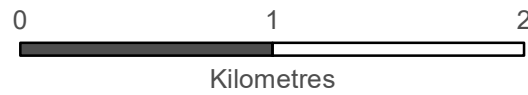
# Winu Project Fauna and Habitat

## Legend

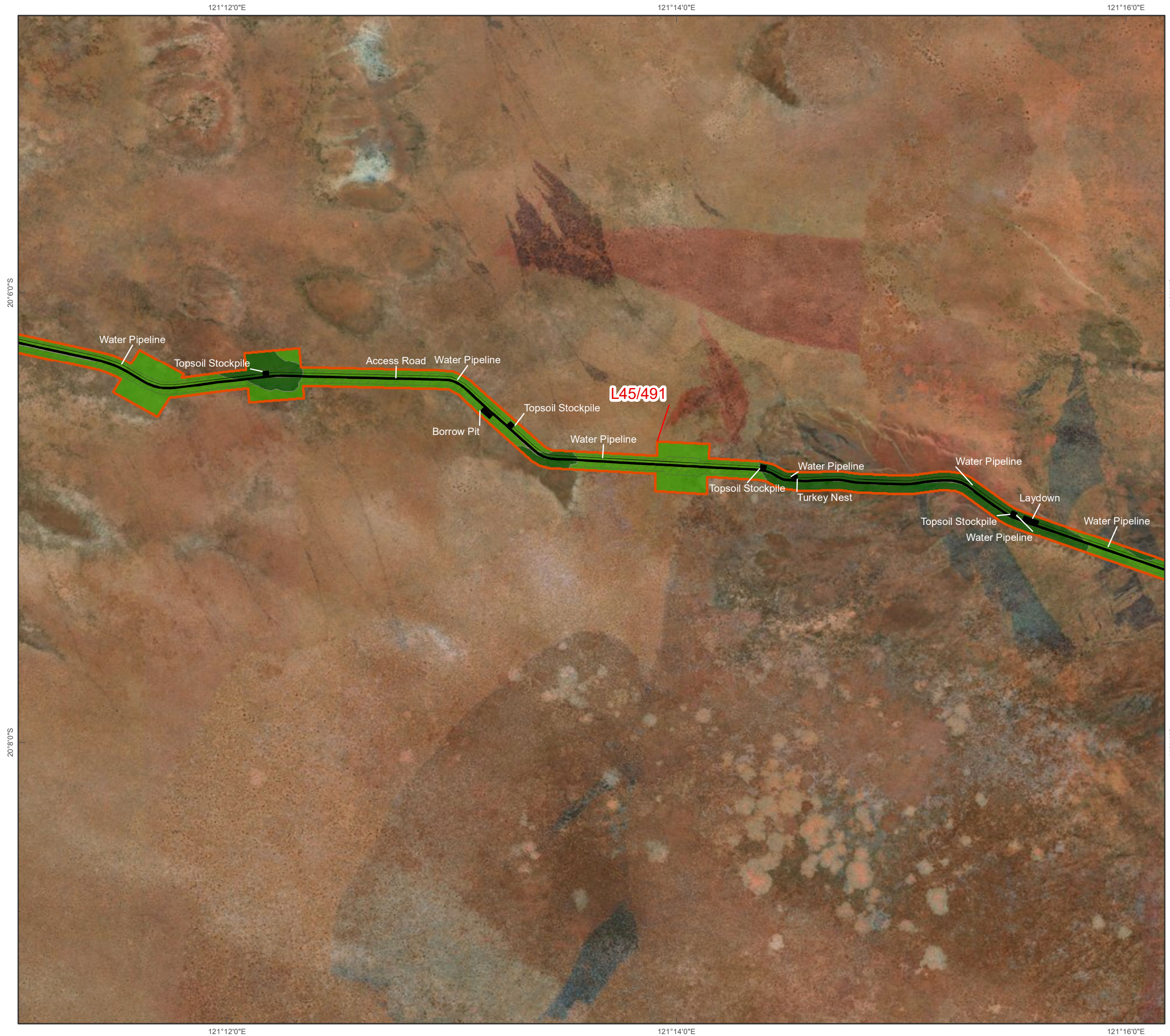
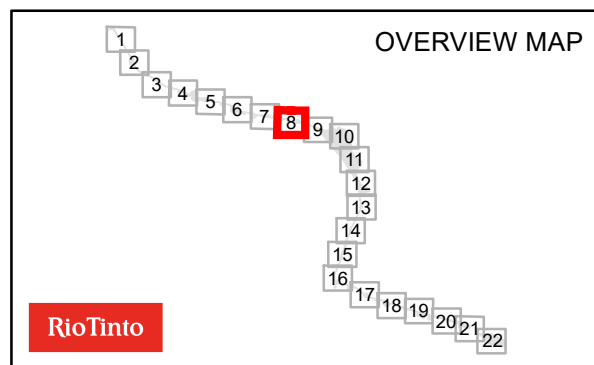
-  Indicative Disturbance Footprint
-  Disturbance Envelope
-  RTX Granted Miscellaneous Licences
-  Native Title Determinations

## Fauna Habitat

-  Rock outcropping
-  Inland sand dunes
-  Gravelly lateritic rises
-  Clayey sand plain with termitaria
-  Gravelly lateritic rise
-  Inferred longitudinal sand dune ridge
-  Inferred shrub and spinifex on sandplain
-  Longitudinal sand dune ridge
-  Shrub and spinifex on sandplain
-  Disturbed/cleared



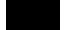



Publisher: Michael Rouse  
Date Published: Thursday, 2 April 2020  
Coordinate System:  
GCS GDA 1994  
Datum: GDA 1994  
Units: Degree  
Scale: 1:30,000  
Rio Tinto © Copyright





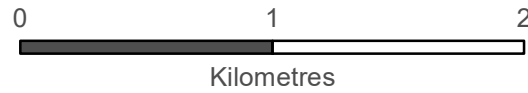
# Winu Project Fauna and Habitat

## Legend

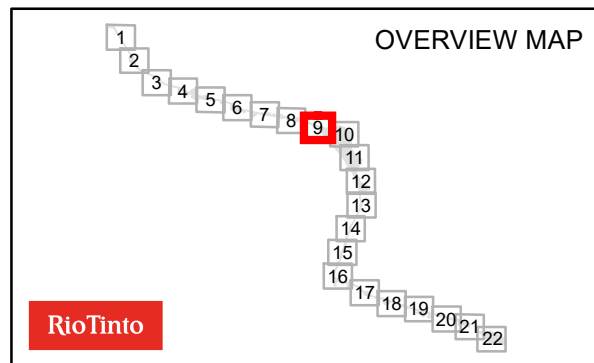
-  Indicative Disturbance Footprint
-  Disturbance Envelope
-  RTX Granted Miscellaneous Licences
-  Native Title Determinations

## Fauna Habitat

-  Rock outcropping
-  Inland sand dunes
-  Gravelly lateritic rises
-  Clayey sand plain with termitaria
-  Gravelly lateritic rise
-  Inferred longitudinal sand dune ridge
-  Inferred shrub and spinifex on sandplain
-  Longitudinal sand dune ridge
-  Shrub and spinifex on sandplain
-  Disturbed/cleared



Publisher: Michael Rouse  
Date Published: Thursday, 2 April 2020  
Coordinate System:  
GCS GDA 1994  
Datum: GDA 1994  
Units: Degree  
Scale: 1:30,000  
Rio Tinto © Copyright



# Winu Project Fauna and Habitat

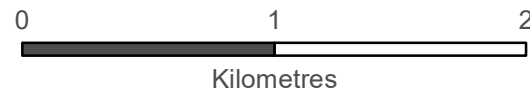
## Legend

### Priority Fauna

- Petrogale lateralis lateralis*
- Disturbance Envelope
- RTX Granted Miscellaneous Licences
- Native Title Determinations

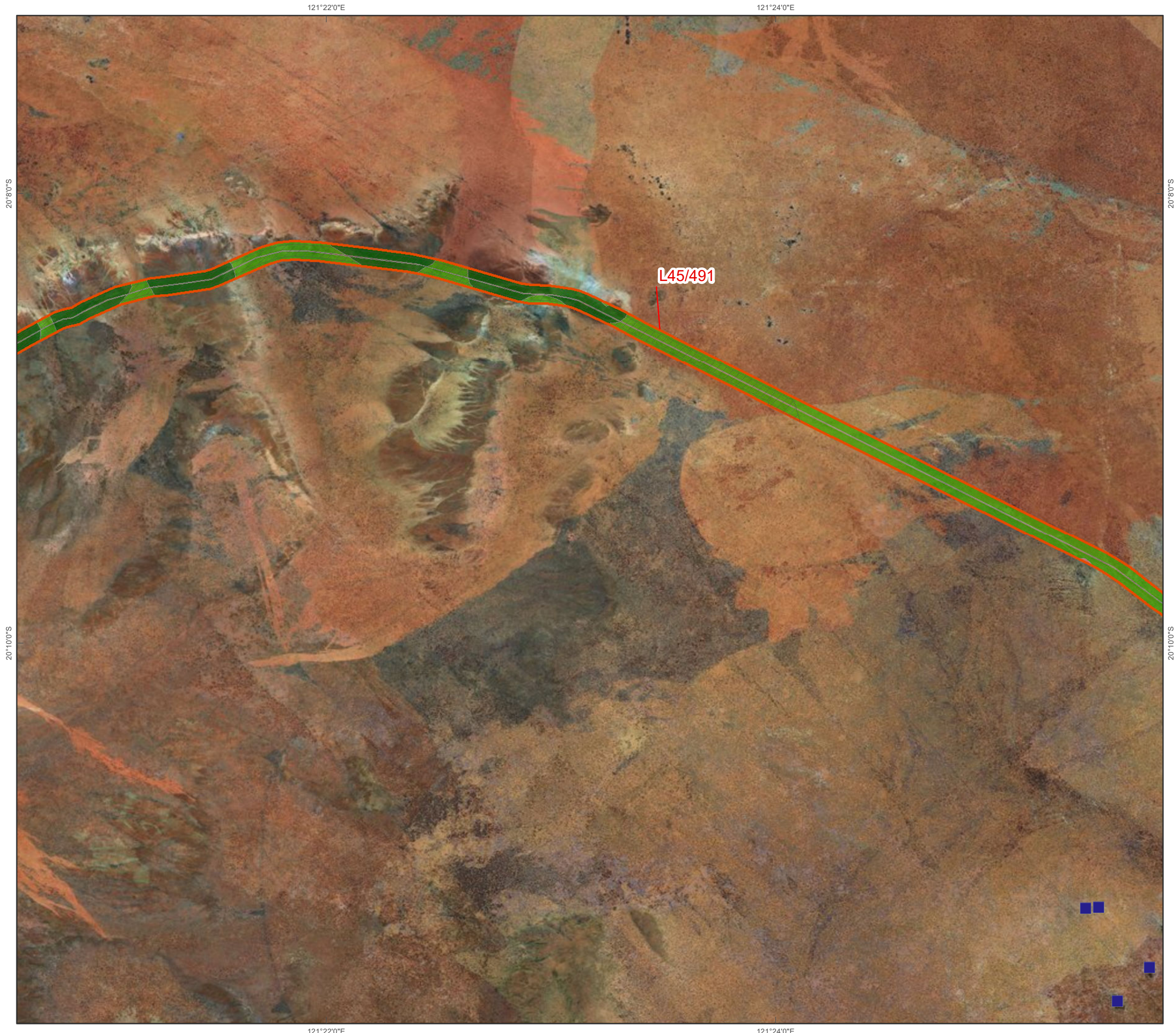
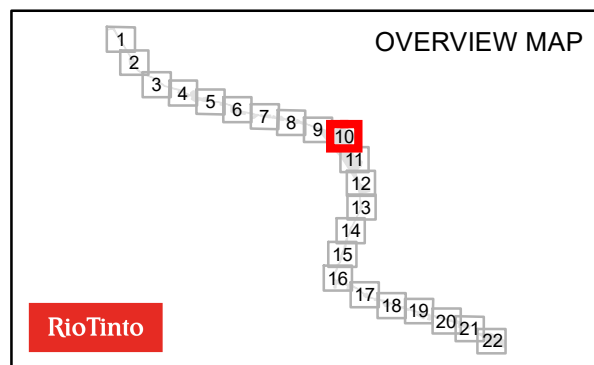
### Fauna Habitat

- Rock outcropping
- Inland sand dunes
- Gravelly lateritic rises
- Clayey sand plain with termitaria
- Gravelly lateritic rise
- Inferred longitudinal sand dune ridge
- Inferred shrub and spinifex on sandplain
- Longitudinal sand dune ridge
- Shrub and spinifex on sandplain
- Disturbed/cleared



Publisher: Michael Rouse  
Date Published: Thursday, 2 April 2020

Coordinate System:  
GCS GDA 1994  
Datum: GDA 1994  
Units: Degree  
Scale: 1:30,000  
Rio Tinto © Copyright



# Winu Project Fauna and Habitat

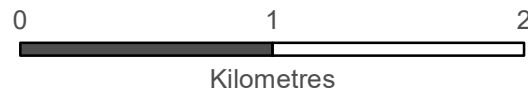
## Legend

### Priority Fauna

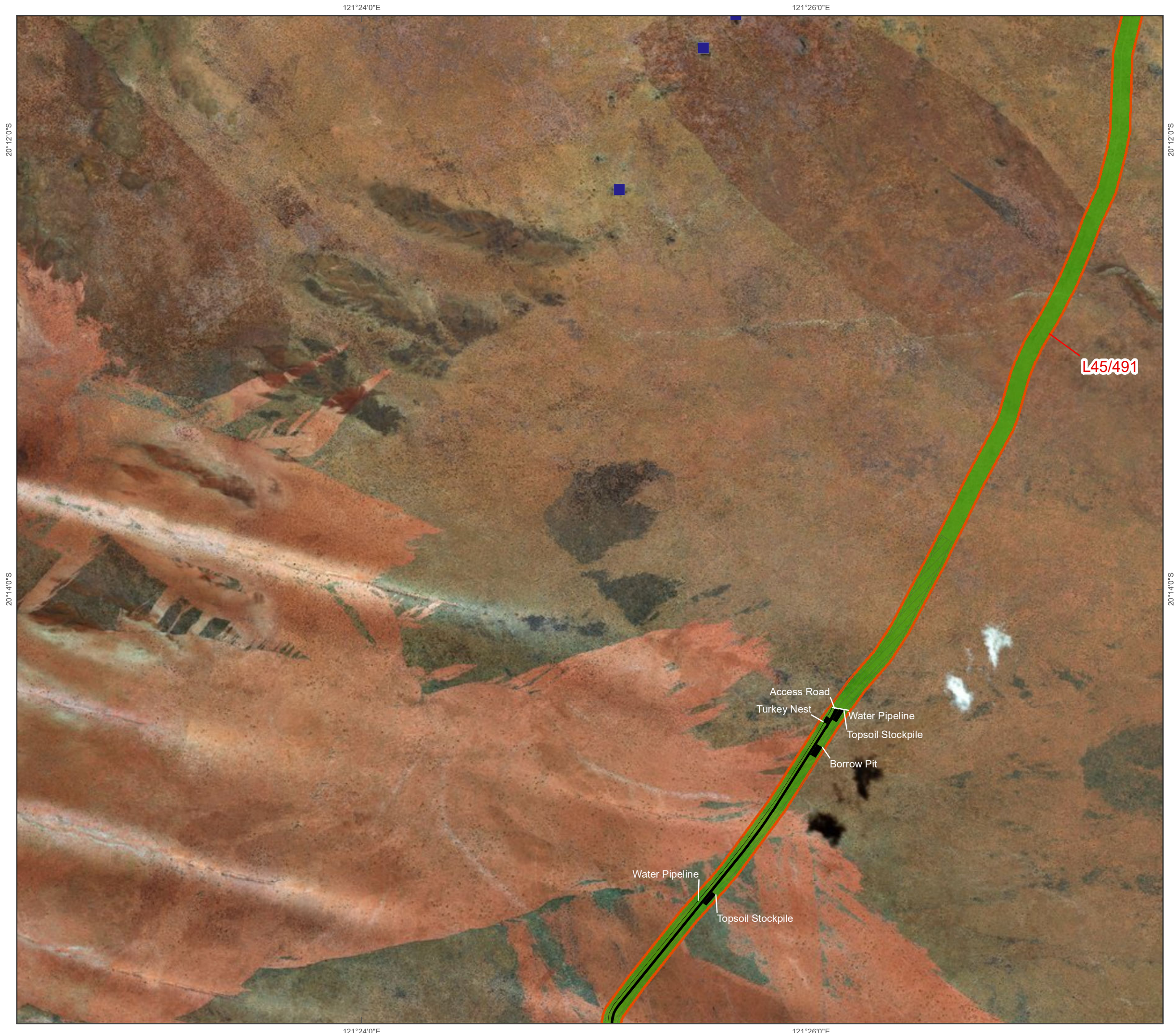
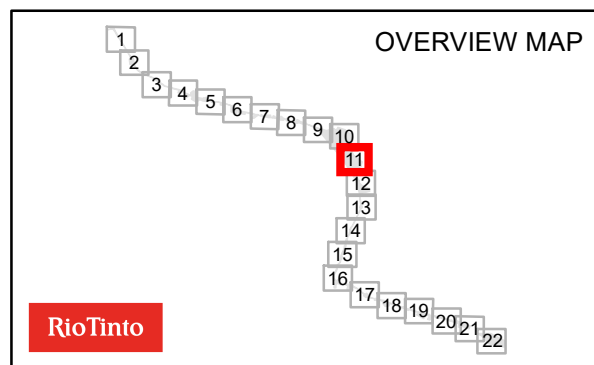
- Petrogale lateralis lateralis*
- Indicative Disturbance Footprint
- Disturbance Envelope
- RTX Granted Miscellaneous Licences
- Native Title Determinations

### Fauna Habitat

- Rock outcropping
- Inland sand dunes
- Gravelly lateritic rises
- Clayey sand plain with termitaria
- Gravelly lateritic rise
- Inferred longitudinal sand dune ridge
- Inferred shrub and spinifex on sandplain
- Longitudinal sand dune ridge
- Shrub and spinifex on sandplain
- Disturbed/cleared



Publisher: Michael Rouse  
 Date Published: Thursday, 2 April 2020  
 Coordinate System:  
 GCS GDA 1994  
 Datum: GDA 1994  
 Units: Degree  
 Scale: 1:30,000  
 Rio Tinto © Copyright



# Winu Project Fauna and Habitat

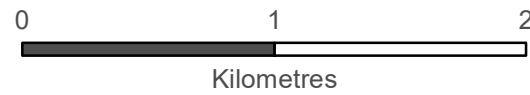
## Legend

### Priority Fauna

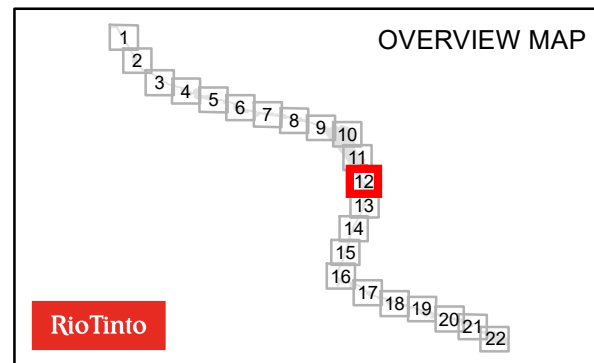
- Notoryctes caurinus
- Indicative Disturbance Footprint
- Disturbance Envelope
- RTX Granted Miscellaneous Licences
- Native Title Determinations

### Fauna Habitat

- Rock outcropping
- Inland sand dunes
- Gravelly lateritic rises
- Clayey sand plain with termitaria
- Gravelly lateritic rise
- Inferred longitudinal sand dune ridge
- Inferred shrub and spinifex on sandplain
- Longitudinal sand dune ridge
- Shrub and spinifex on sandplain
- Disturbed/cleared

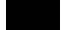





**Publisher:** Michael Rouse  
**Date Published:** Thursday, 2 April 2020  
**Coordinate System:**  
 GCS GDA 1994  
 Datum: GDA 1994  
 Units: Degree  
**Scale:** 1:30,000  
 Rio Tinto © Copyright



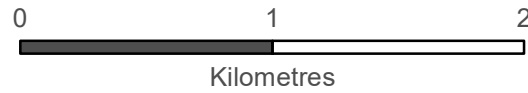
# Winu Project Fauna and Habitat

## Legend

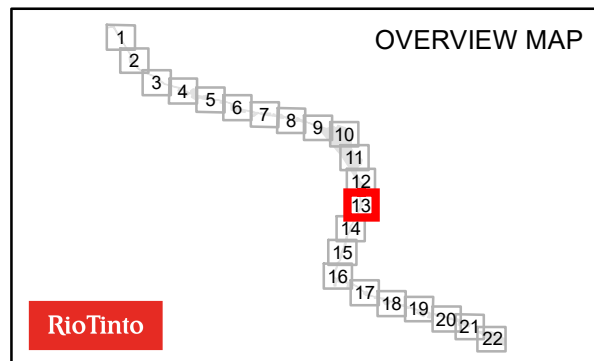
-  Indicative Disturbance Footprint
-  Disturbance Envelope
-  RTX Granted Miscellaneous Licences
-  Native Title Determinations

## Fauna Habitat

-  Rock outcropping
-  Inland sand dunes
-  Gravelly lateritic rises
-  Clayey sand plain with termitaria
-  Gravelly lateritic rise
-  Inferred longitudinal sand dune ridge
-  Inferred shrub and spinifex on sandplain
-  Longitudinal sand dune ridge
-  Shrub and spinifex on sandplain
-  Disturbed/cleared



Publisher: Michael.Rouse  
Date Published: Thursday, 2 April 2020  
Coordinate System:  
GCS GDA 1994  
Datum: GDA 1994  
Units: Degree  
Scale: 1:30,000  
Rio Tinto © Copyright



# Winu Project Fauna and Habitat

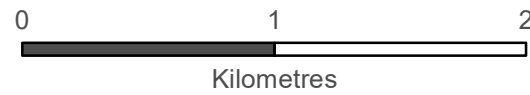
## Legend

### Priority Fauna

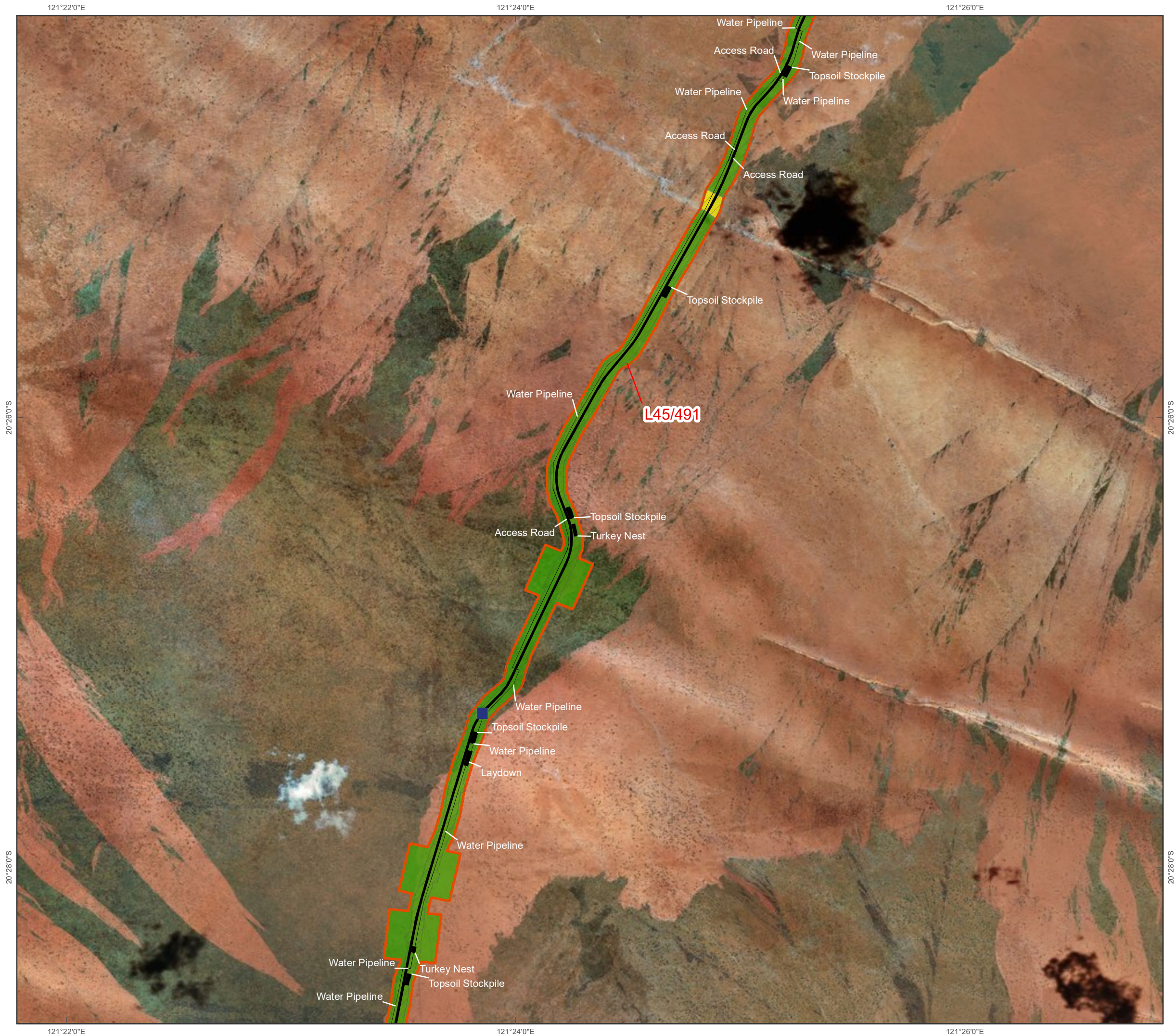
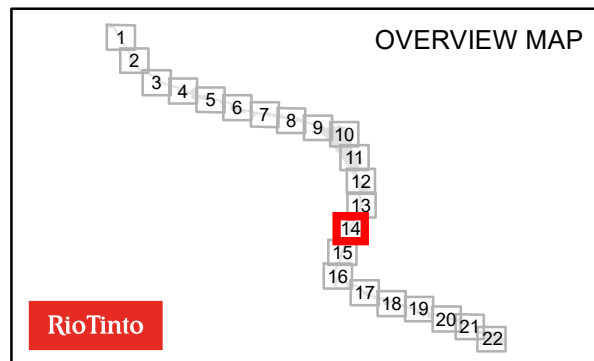
- Lerista separanda*
- Indicative Disturbance Footprint
- Disturbance Envelope
- RTX Granted Miscellaneous Licences
- Native Title Determinations

### Fauna Habitat

- Rock outcropping
- Inland sand dunes
- Gravelly lateritic rises
- Clayey sand plain with termitaria
- Gravelly lateritic rise
- Inferred longitudinal sand dune ridge
- Inferred shrub and spinifex on sandplain
- Longitudinal sand dune ridge
- Shrub and spinifex on sandplain
- Disturbed/cleared

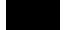





Publisher: Michael Rouse  
Date Published: Thursday, 2 April 2020  
Coordinate System:  
GCS GDA 1994  
Datum: GDA 1994  
Units: Degree  
Scale: 1:30,000  
Rio Tinto © Copyright



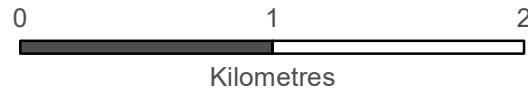
# Winu Project Fauna and Habitat

## Legend

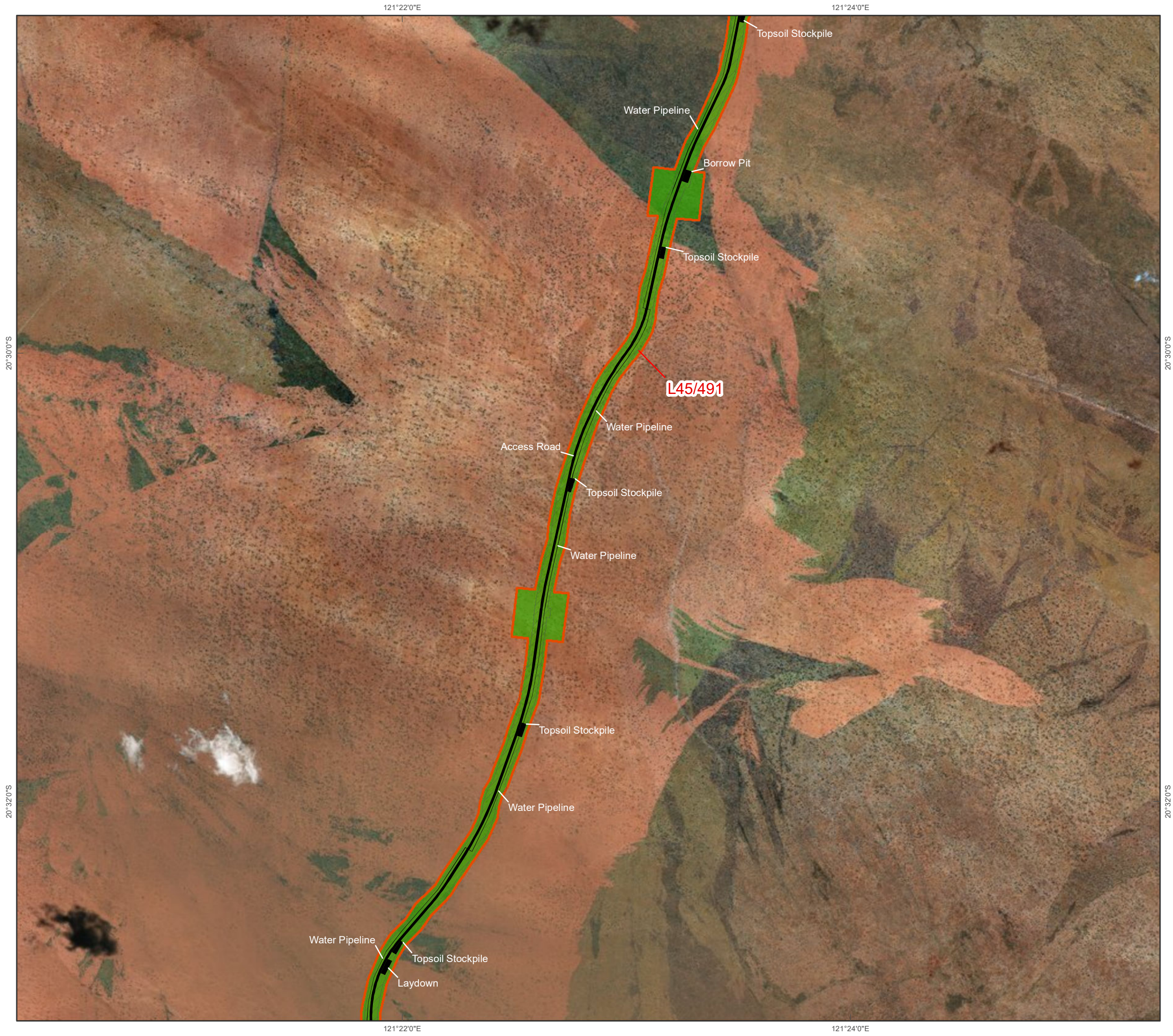
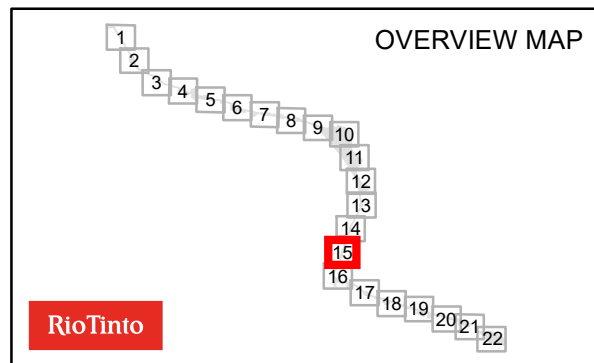
-  Indicative Disturbance Footprint
-  Disturbance Envelope
-  RTX Granted Miscellaneous Licences
-  Native Title Determinations

## Fauna Habitat

-  Rock outcropping
-  Inland sand dunes
-  Gravelly lateritic rises
-  Clayey sand plain with termitaria
-  Gravelly lateritic rise
-  Inferred longitudinal sand dune ridge
-  Inferred shrub and spinifex on sandplain
-  Longitudinal sand dune ridge
-  Shrub and spinifex on sandplain
-  Disturbed/cleared



Publisher: Michael Rouse  
Date Published: Thursday, 2 April 2020  
Coordinate System:  
GCS GDA 1994  
Datum: GDA 1994  
Units: Degree  
Scale: 1:30,000  
Rio Tinto © Copyright



# Winu Project Fauna and Habitat

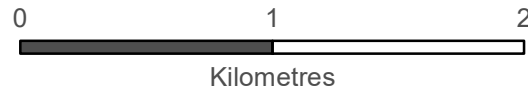
## Legend

### Priority Fauna

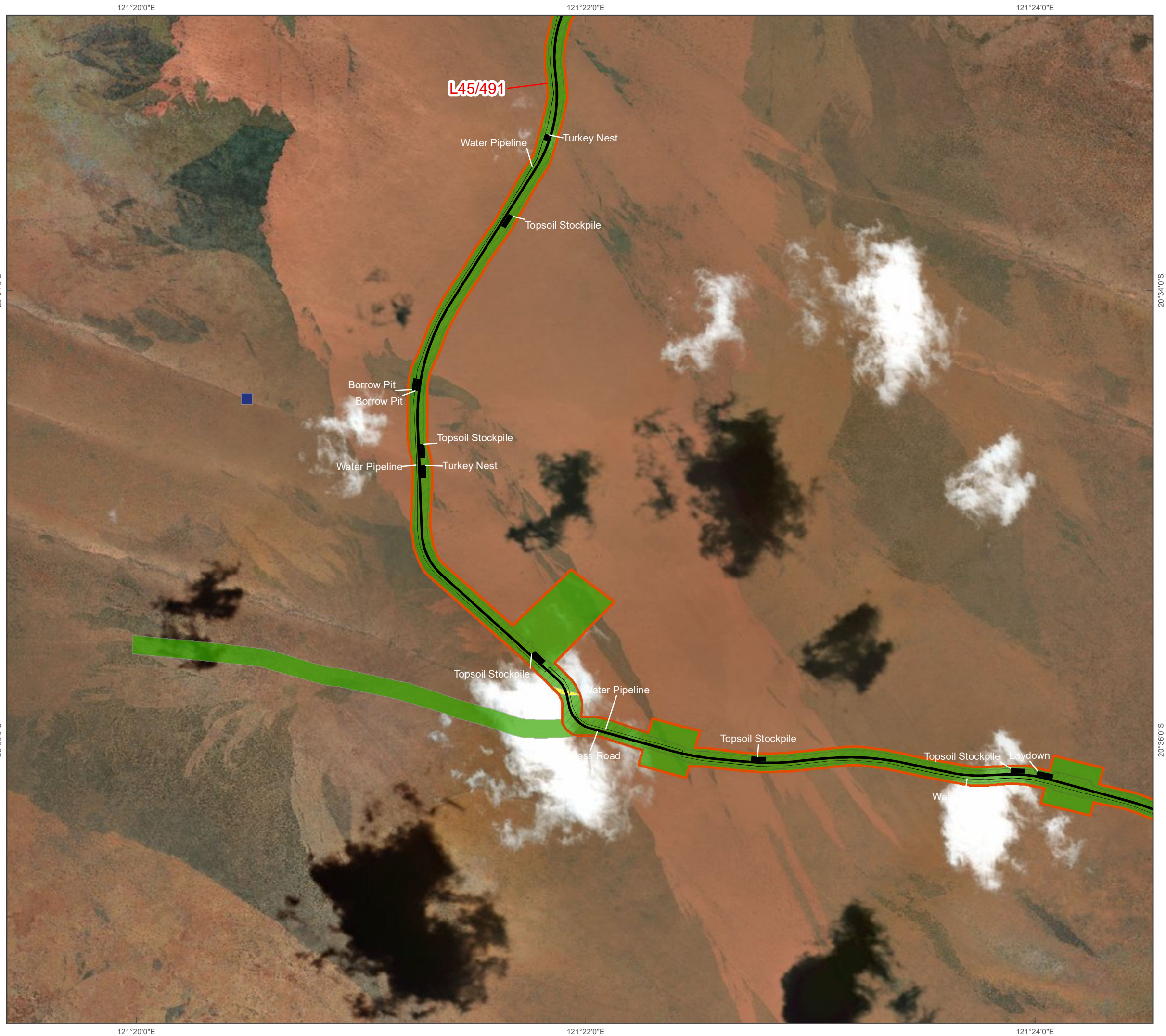
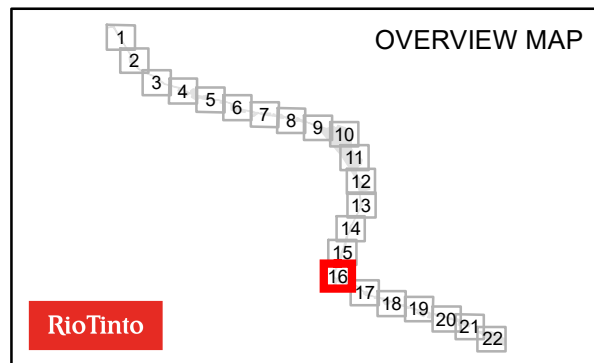
- Lerista separanda*
- Indicative Disturbance Footprint
- Disturbance Envelope
- RTX Granted Miscellaneous Licences
- Native Title Determinations

### Fauna Habitat

- Rock outcropping
- Inland sand dunes
- Gravelly lateritic rises
- Clayey sand plain with termitaria
- Gravelly lateritic rise
- Inferred longitudinal sand dune ridge
- Inferred shrub and spinifex on sandplain
- Longitudinal sand dune ridge
- Shrub and spinifex on sandplain
- Disturbed/cleared



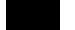



Publisher: Michael Rouse  
 Date Published: Thursday, 2 April 2020  
 Coordinate System:  
 GCS GDA 1994  
 Datum: GDA 1994  
 Units: Degree  
 Scale: 1:30,000  
 Rio Tinto © Copyright





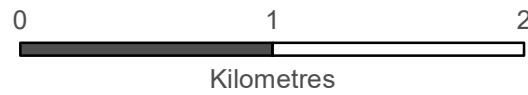
# Winu Project Fauna and Habitat

## Legend

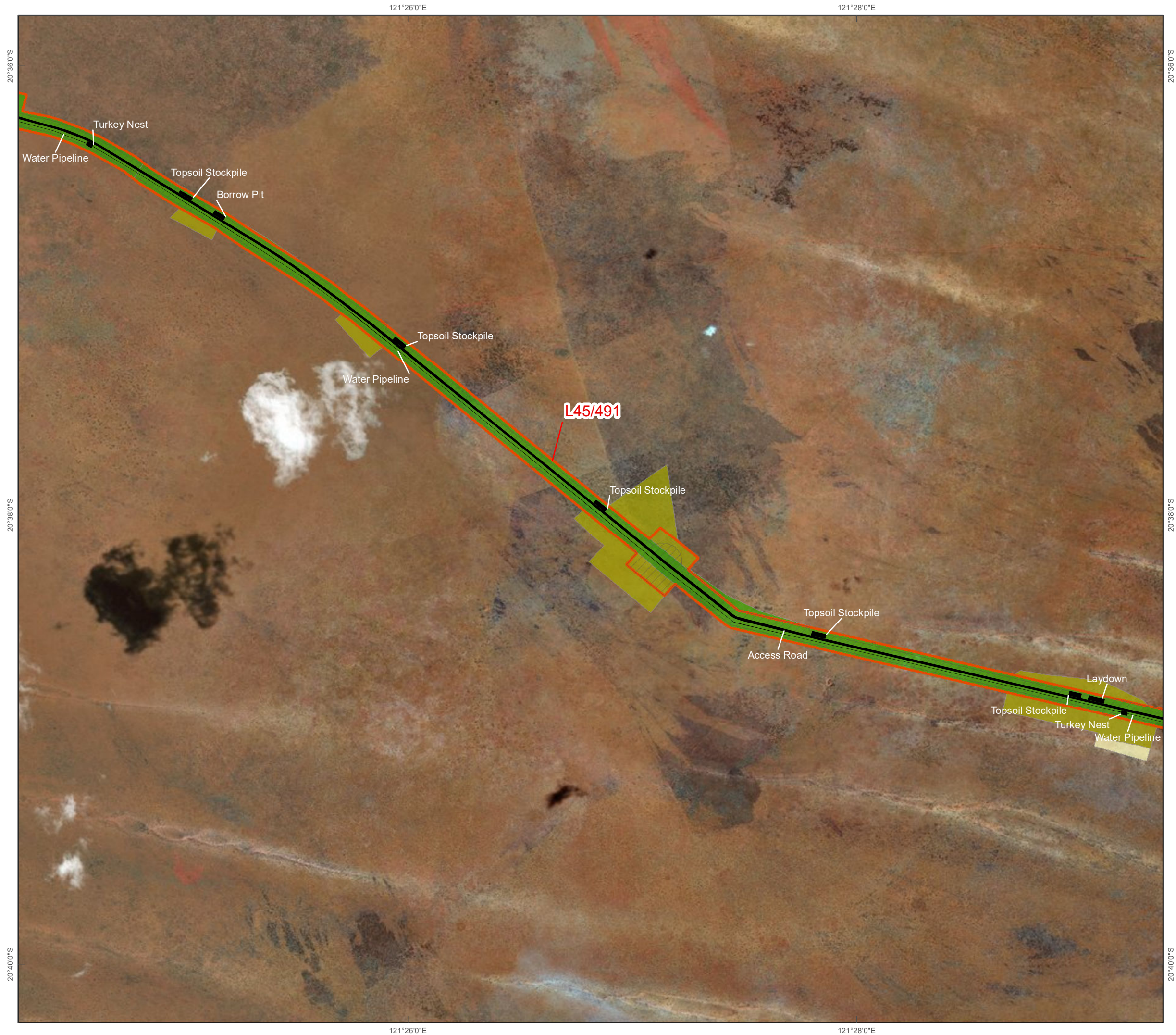
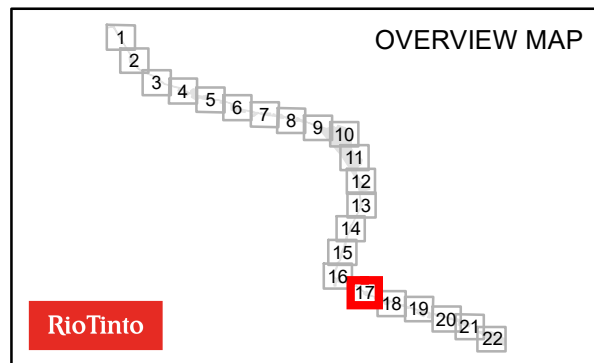
-  Indicative Disturbance Footprint
-  Disturbance Envelope
-  RTX Granted Miscellaneous Licences
-  Native Title Determinations

## Fauna Habitat

-  Rock outcropping
-  Inland sand dunes
-  Gravelly lateritic rises
-  Clayey sand plain with termitaria
-  Gravelly lateritic rise
-  Inferred longitudinal sand dune ridge
-  Inferred shrub and spinifex on sandplain
-  Longitudinal sand dune ridge
-  Shrub and spinifex on sandplain
-  Disturbed/cleared

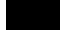





Publisher: Michael Rouse  
Date Published: Thursday, 2 April 2020  
Coordinate System:  
GCS GDA 1994  
Datum: GDA 1994  
Units: Degree  
Scale: 1:30,000  
Rio Tinto © Copyright



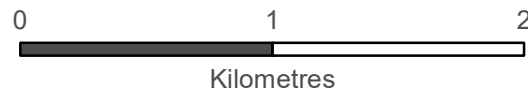
# Winu Project Fauna and Habitat

## Legend

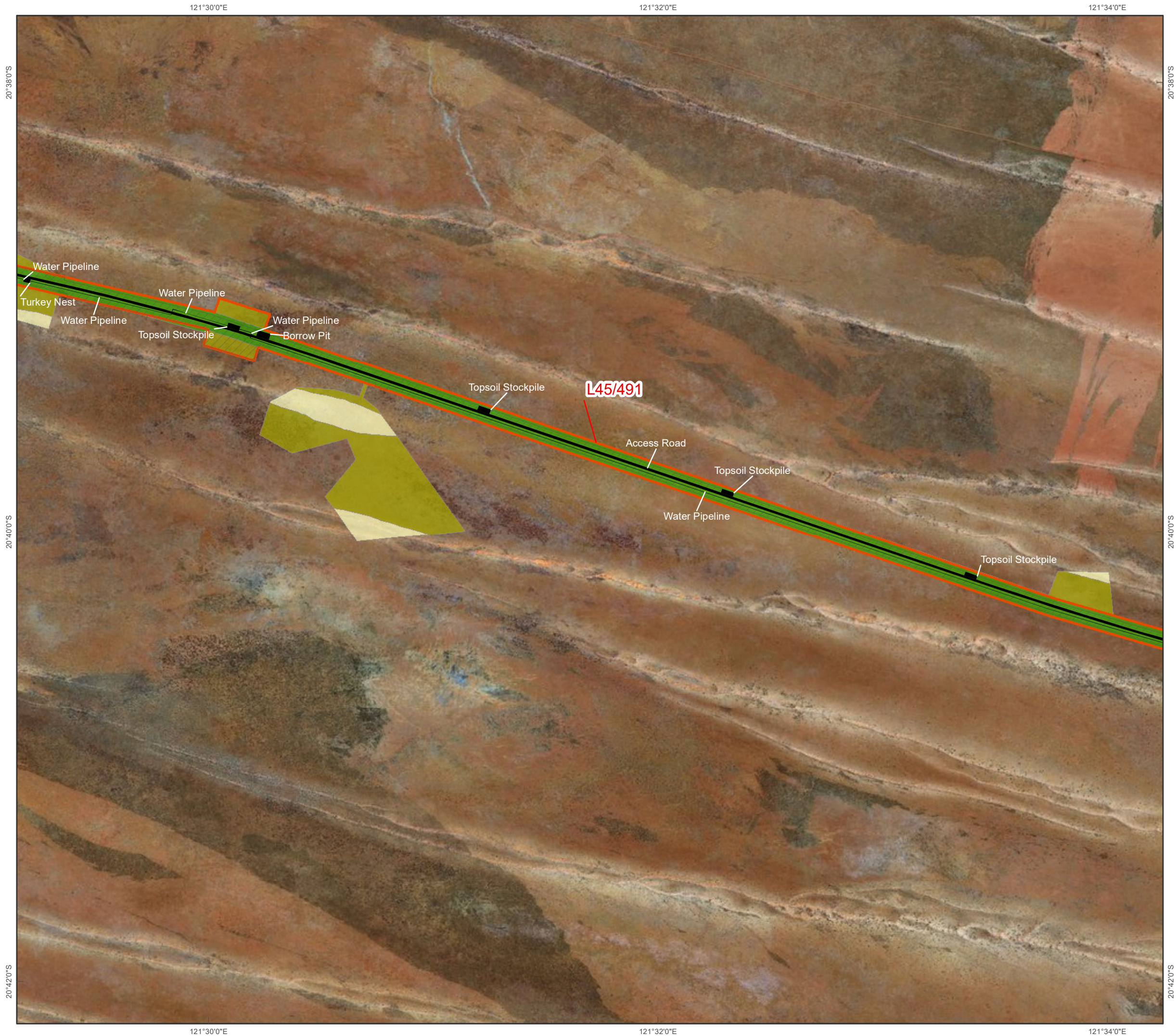
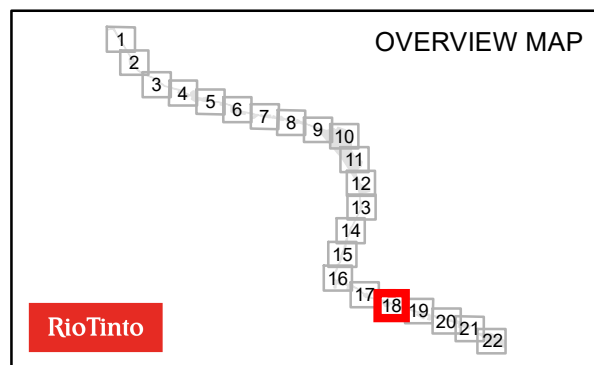
-  Indicative Disturbance Footprint
-  Disturbance Envelope
-  RTX Granted Miscellaneous Licences
-  Native Title Determinations

## Fauna Habitat

-  Rock outcropping
-  Inland sand dunes
-  Gravelly lateritic rises
-  Clayey sand plain with termitaria
-  Gravelly lateritic rise
-  Inferred longitudinal sand dune ridge
-  Inferred shrub and spinifex on sandplain
-  Longitudinal sand dune ridge
-  Shrub and spinifex on sandplain
-  Disturbed/cleared



Publisher: Michael Rouse  
Date Published: Thursday, 2 April 2020  
Coordinate System:  
GCS GDA 1994  
Datum: GDA 1994  
Units: Degree  
Scale: 1:30,000  
Rio Tinto © Copyright



# Winu Project Fauna and Habitat

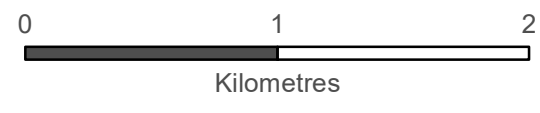
## Legend

### Priority Fauna

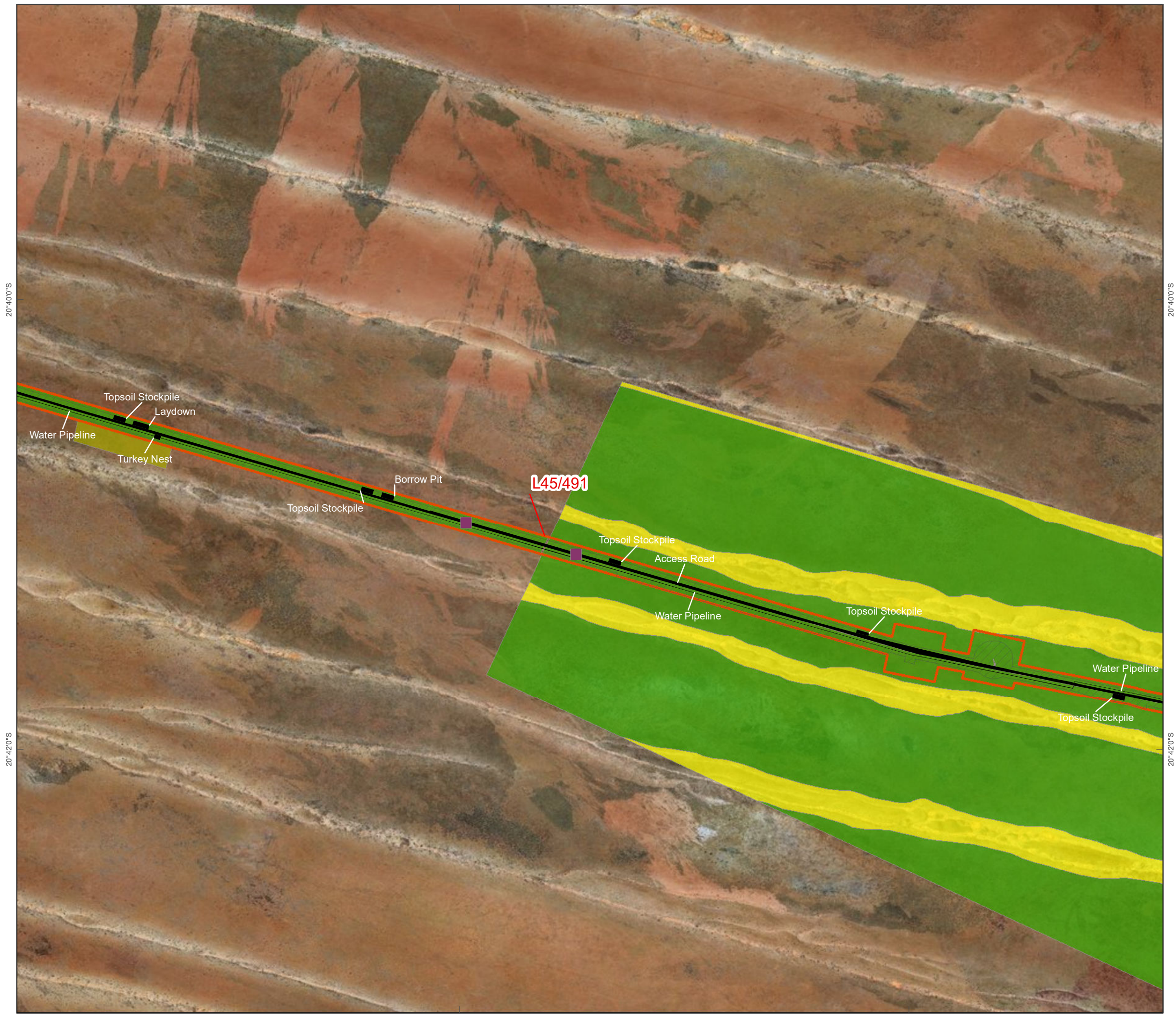
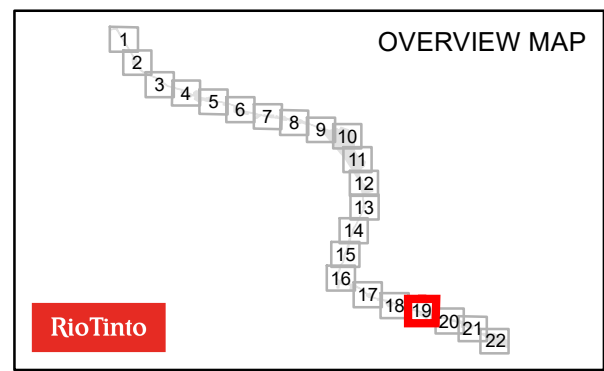
- Macrotis lagotis
- Indicative Disturbance Footprint
- Disturbance Envelope
- RTX Granted Miscellaneous Licences
- Native Title Determinations

### Fauna Habitat

- Rock outcropping
- Inland sand dunes
- Gravelly lateritic rises
- Clayey sand plain with termitaria
- Gravelly lateritic rise
- Inferred longitudinal sand dune ridge
- Inferred shrub and spinifex on sandplain
- Longitudinal sand dune ridge
- Shrub and spinifex on sandplain
- Disturbed/cleared



**Publisher:** Michael Rouse  
**Date Published:** Thursday, 2 April 2020  
**Coordinate System:**  
 GCS GDA 1994  
 Datum: GDA 1994  
 Units: Degree  
**Scale:** 1:30,000  
 Rio Tinto © Copyright



# Winu Project Fauna and Habitat

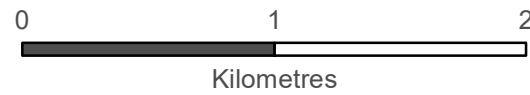
## Legend

### Priority Fauna

- Dasyercus blythi
- Indicative Disturbance Footprint
- Disturbance Envelope
- RTX Granted Miscellaneous Licences
- Native Title Determinations

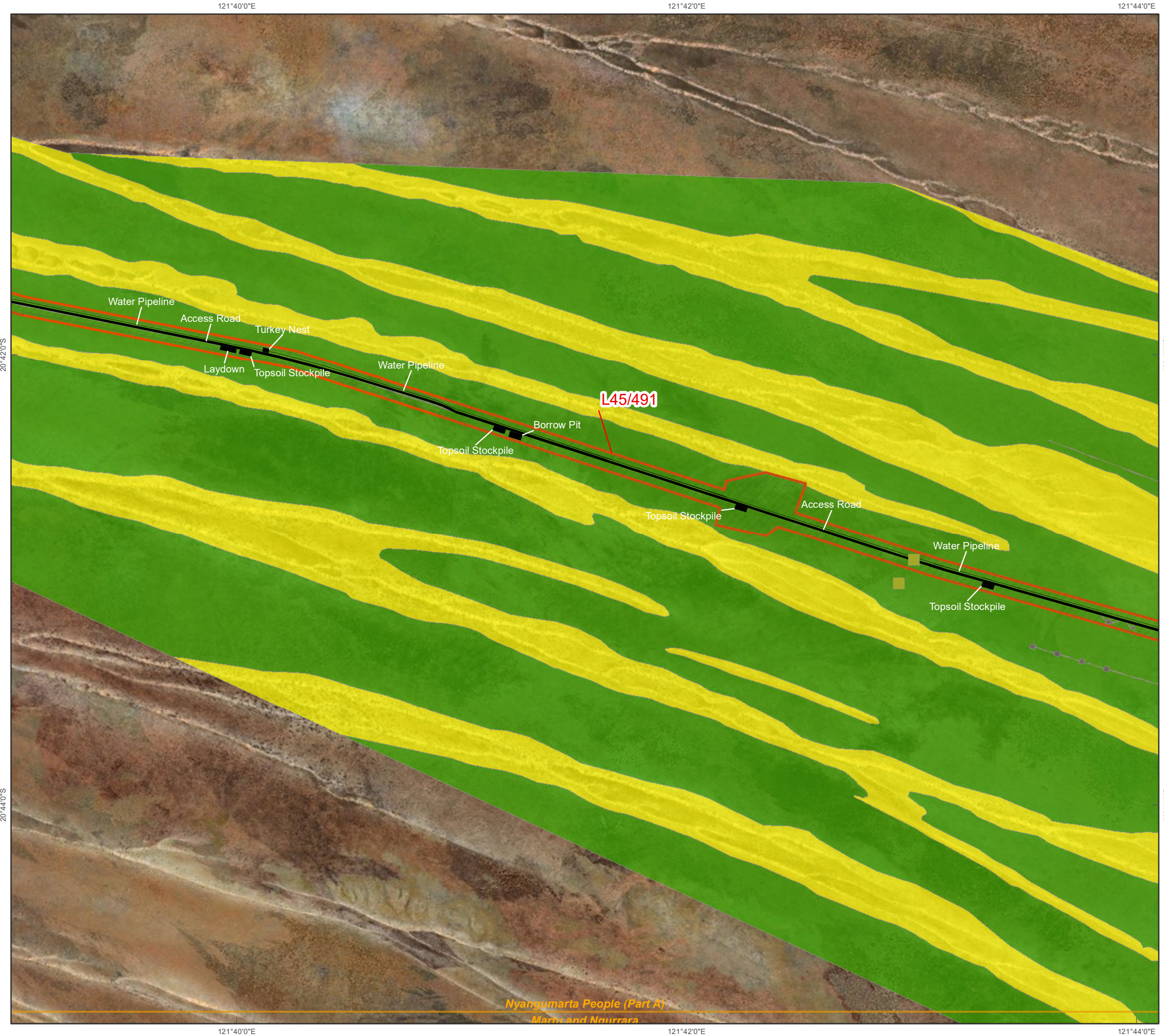
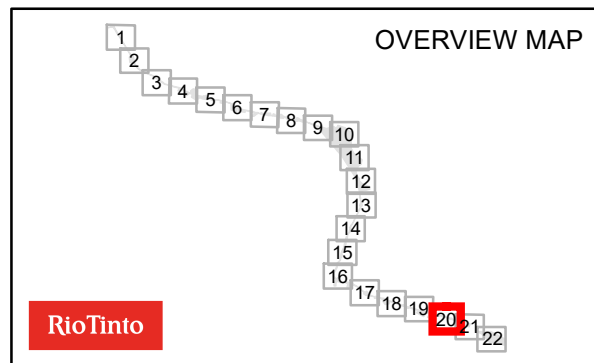
### Fauna Habitat

- Rock outcropping
- Inland sand dunes
- Gravelly lateritic rises
- Clayey sand plain with termitaria
- Gravelly lateritic rise
- Inferred longitudinal sand dune ridge
- Inferred shrub and spinifex on sandplain
- Longitudinal sand dune ridge
- Shrub and spinifex on sandplain
- Disturbed/cleared



Publisher: Michael Rouse  
Date Published: Thursday, 2 April 2020

Coordinate System:  
GCS GDA 1994  
Datum: GDA 1994  
Units: Degree  
Scale: 1:30,000  
Rio Tinto © Copyright



Nyangumarta People (Part A)  
Marte and Ngurrara

# Winu Project Fauna and Habitat

## Legend

### Priority Fauna

- Charadrius veredus
- Dasycercus blythi
- Gelochelidon nilotica
- Lerista separanda
- Macrotis lagotis

Indicative Disturbance Footprint

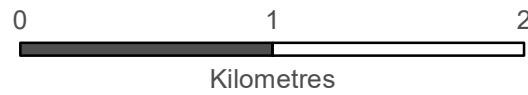
Disturbance Envelope

RTX Granted Miscellaneous Licences

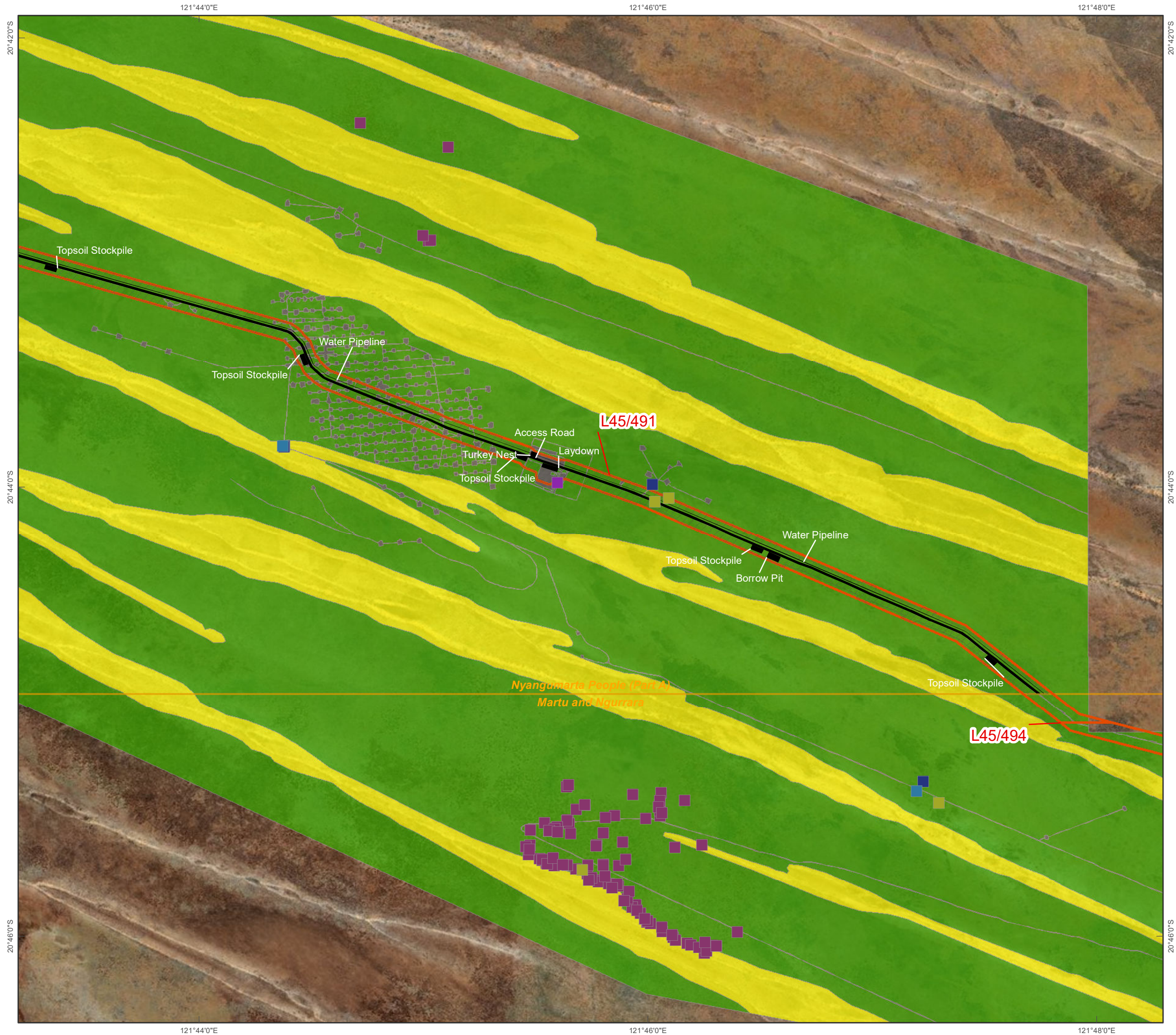
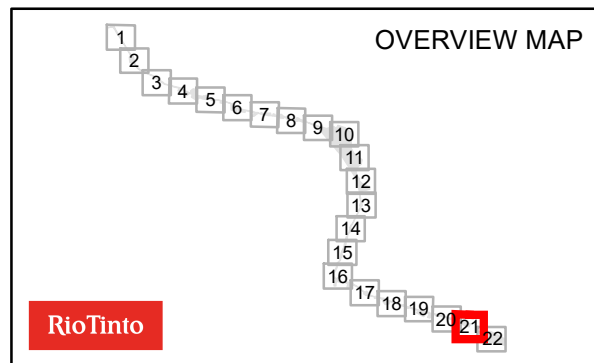
Native Title Determinations

### Fauna Habitat

- Rock outcropping
- Inland sand dunes
- Gravelly lateritic rises
- Clayey sand plain with termitaria
- Gravelly lateritic rise
- Inferred longitudinal sand dune ridge
- Inferred shrub and spinifex on sandplain
- Longitudinal sand dune ridge
- Shrub and spinifex on sandplain
- Disturbed/cleared



Publisher: Michael Rouse  
Date Published: Thursday, 2 April 2020  
Coordinate System:  
GCS GDA 1994  
Datum: GDA 1994  
Units: Degree  
Scale: 1:30,000  
Rio Tinto © Copyright



# Winu Project Fauna and Habitat

## Legend

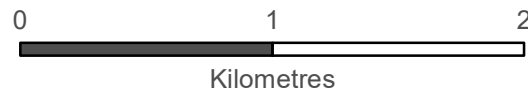
### Priority Fauna

- Charadrius veredus
- Dasycercus blythi
- Lerista separanda
- Macrotis lagotis
- Notoryctes caurinus
- Indicative Disturbance Footprint
- Disturbance Envelope

- RTX Granted Miscellaneous Licences
- Native Title Determinations

### Fauna Habitat

- Rock outcropping
- Inland sand dunes
- Gravelly lateritic rises
- Clayey sand plain with termitaria
- Gravelly lateritic rise
- Inferred longitudinal sand dune ridge
- Inferred shrub and spinifex on sandplain
- Longitudinal sand dune ridge
- Shrub and spinifex on sandplain
- Disturbed/cleared



Publisher: Michael Rouse  
Date Published: Thursday, 2 April 2020  
Coordinate System:  
GCS GDA 1994  
Datum: GDA 1994  
Units: Degree  
Scale: 1:30,000  
Rio Tinto © Copyright

